

0CNP5-M61500EN

Directions for the Parts Catalog.

1. This Parts Catalog shows both standard and optional parts.
2. Parts may change without prior notice.
3. The following is an example of the Parts Catalog format.

REF.	LEV.	PARTS NO.	DESCRIPTION	Q'TY						I	R
				(A)	(B)	(C)	(D)	(E)	(F)		
1	1	729595-51390	FUEL INJECTION PUMP	1	1	1	1	1			1
1-1	1	729595-51391	FUEL INJECTION PUMP	1	1	1	1	1		N	1
		(A=E00185) (B=E00200)									
3	2	26022-060162	SCREW M 6X 16	9	9	9	9	9			
3-1	2	26022-060162	SCREW M 6X 16	4	4	4	4	4		K	
		(A=E00156) (B=E00156) (C=E00156) (D=E00156) (E=E00156)									
4	2	129470-51040	CAMSHAFT	1	1	1	1	1			
5	2	122710-51050	BEARING, ROLLER	2	2	2	2	2			
6	2	129470-51060	RETAINER	1	1	1	1	1			

Remarks
(1) BOOST COMPEMSATOR TYPE. OPTIONAL PART, TO E00155,(4JH-DT, 4JH-DTZ

① Ref. No.

The Ref. No. listed may not be in accordance with the illustration Ref. No.

(Ex.) Illustration No.

List Ref No.

1

1

(Before change)

1-1

(After change)

For interchangeable symbols N, R and K, illustrations for new parts may be abbreviated.

② Lev. (Level)

Level indication

The numbers below indicate the level of relativity towards the main part.

1 ----- Main parts (Assembly parts)

2 ----- Sub component included in " 1 ".

3 ----- Sub component included in " 2 ".

Note) Parts that are not for sale are partially illustrated but not listed.

③ Interchangeability Symbol

When a part change takes place, one of the following interchangeability symbols is indicated beside the part.

Symbol	Interchangeability	Contents note
N	Old $\begin{matrix} \leftarrow \text{Yes} \\ \text{No} \rightarrow \end{matrix}$ New	New Part is interchangeable for Old Part but Old Part is not interchangeable for New Part.
Q	Old $\begin{matrix} \leftarrow \text{No} \\ \text{Yes} \rightarrow \end{matrix}$ New	New Part is not interchangeable for Old Part but Old Part is interchangeable for New Part.
R	Old $\begin{matrix} \leftarrow \text{Yes} \\ \text{Yes} \rightarrow \end{matrix}$ New	New/ Old Parts are both interchangeable.
S	Old $\begin{matrix} \leftarrow \text{No} \\ \text{No} \rightarrow \end{matrix}$ New	New/ Old Parts are both not interchangeable.
W		Part newly added.
Z		Part discontinued.
F		Not interchangeable by a single part but interchangeable together with related parts.
K		Changes only for used parts quantities.

④ Effective Machine No.

When a part changes, the effective Machine No. will be indicated in the (A)-(F) column.

Product Symbol	Product No.	Product Symbol	Product No.
C	Clutch No. Compressor No.	F	Machine No. (Agricultural Equip.)
D	Drive No.	M	Machine No.
E	Engine No.		

Note 1) A date may follow the symbol. (Ex.) 1996.01

Note 2) "XXXXX" and "ZZZZZ" are for parts that could not be predicted or for engine models that could not be identified.

Note 3) (A=E00185) is the E (Engine Serial Number) for the column (A) model (in this case 4JH-DT) after the parts design change.

⑤ Remarks

Figures or alphabets (symbols) are entered in the remarks column.

The comments (remarks) on parts that are indicated at the bottom of the illustration are the same symbols as those stated above.

Contents

Fig. No.	Fig. Name
PULLEY & TENSION SEC	
1.	TENSION ARM
2.	PULLEY
FRAME SECTION	
3.	BODY FRAME
TRAVELING SECTION(1)	
4.	IDLER
5.	TRACK ROLLER
CONTROL SECTION	
6.	HANDLE
7.	TRAVEL CLUTCH LEVER
8.	DEADMAN LEVER
9.	BRAKE LEVER
10.	MAIN CHANGE LEVER
11.	SIDE CLUTCH LEVER
PLATFORM CARRIER SEC	
12.	DUMP CHANGE LEVER
13.	BACK FACE CARRIER
14.	PLATFORM CARRIER 1
15.	PLATFORM CARRIER 2

Fig. No.	Fig. Name
ACCESSORIES & LABELS	
16.	ACCESSORIES & LABELS
TRAVELING SECTION(2)	
17.	TRANSMISSION CASE
18.	MAIN SHAFT
19.	TRANSMISSION SHAFT B
20.	SIDE CLUTCH SHAFT
21.	MAIN SHAFT
22.	BRAKE
23.	SIDE CLUTCH
24.	MAIN CHANGE

Fig.1. TENSION ARM

(A)=MC910,PQ
(B)=
(C)=

(D)=
(E)=
(F)=

No.	Lev.	Parts No.	Description	Q'ty						I	R
				(A)	(B)	(C)	(D)	(E)	(F)		
1	1	1N3501-22000	ARM A,TENSION	1							
2	1	24104-062024	BEARING, BALL 6202UU	1							
3	1	22242-000150	RING, 15	2							
4	1	22242-000160	RING, 16	1							
5	1	1N1430-22070	ROLLER,TENSION	1							
6	1	22252-000350	RING, 35	1							

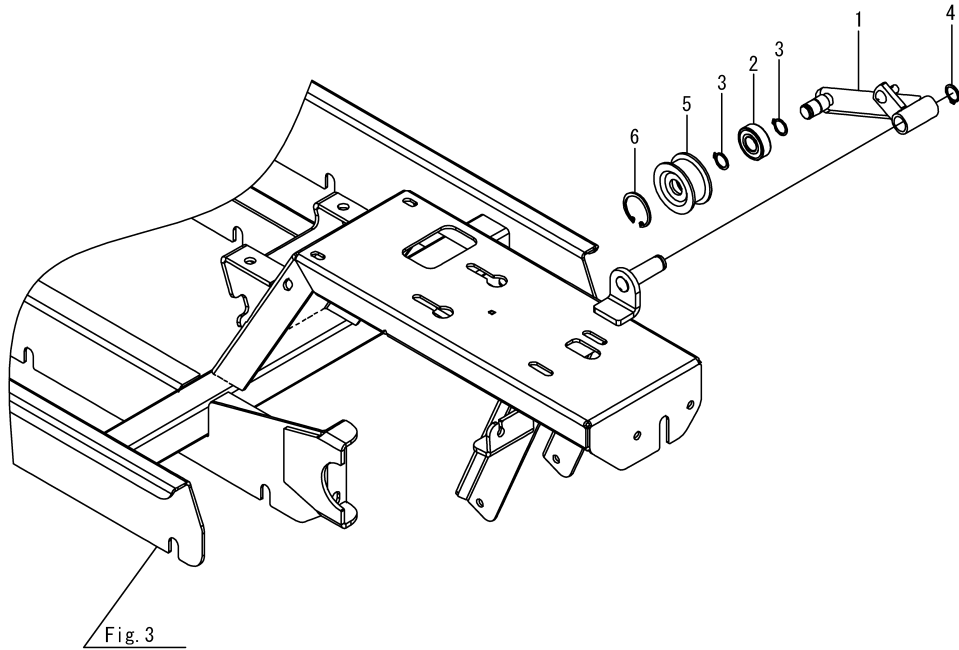


Fig. 3

Fig.2. PULLEY

ENGINE SPECIFICATION
GB100LN-211

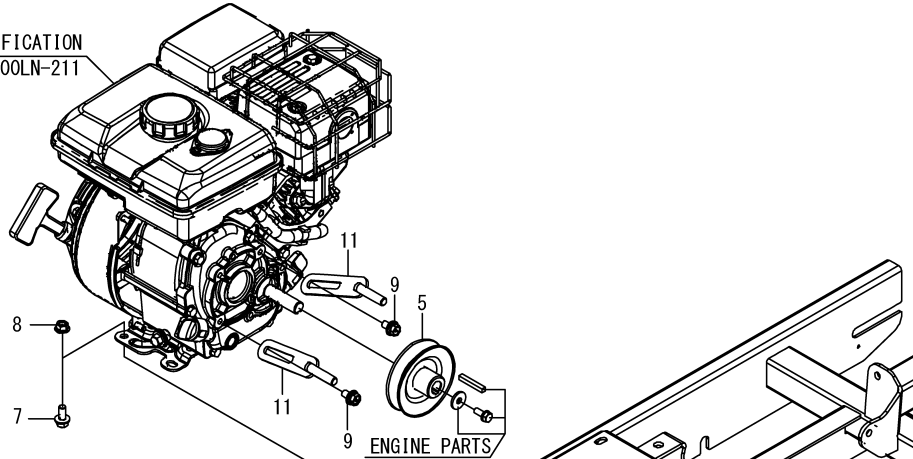
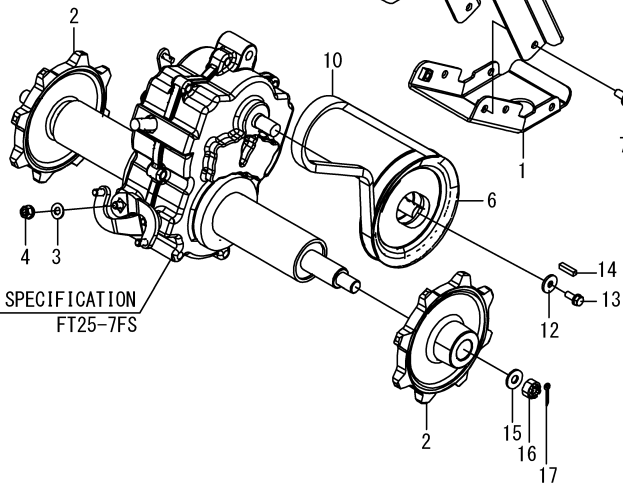


Fig. 3

MISSION SPECIFICATION
FT25-7FS

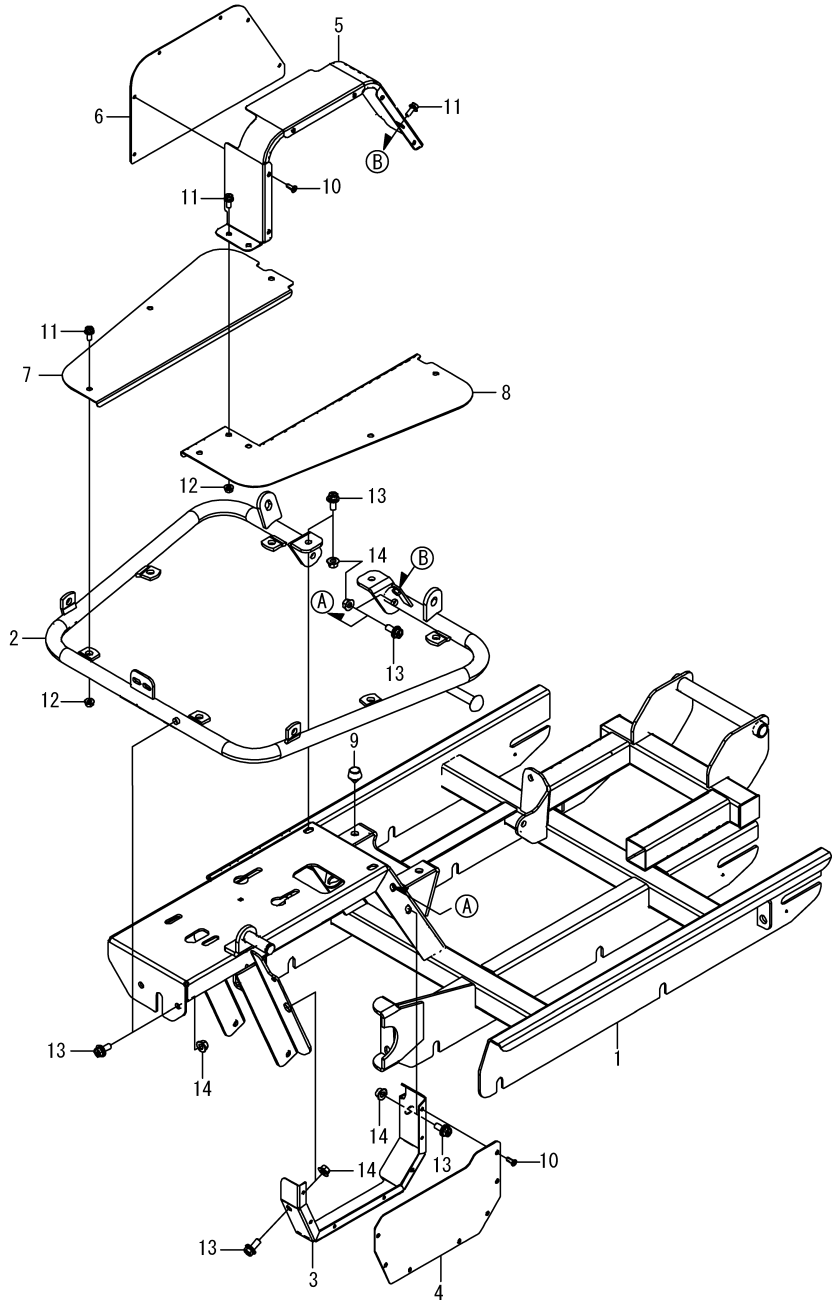


(A)=MC910,PQ
(B)=
(C)=

(D)=
(E)=
(F)=

No.	Lev.	Parts No.	Description	Q'ty						I	R
				(A)	(B)	(C)	(D)	(E)	(F)		
1	1	1N3501-58370	GUARD,UNDER	1							
2	1	1N3503-35060	SPROCKET	2							
3	1	22137-080000	WASHER, 8	2							
4	1	26051-080002	NUT, M8	2							
5	1	1N3501-21070	PULLEY,ENGINE	1							
6	1	1N3501-21010	PULLEY,TRANSMISSION	1							
7	1	26018-080202	BOLT, M8X 20	6							
8	1	26367-080002	NUT, M8	4							
9	1	26018-080164	BOLT M 8X 16	2							
10	1	25123-003201M	V-BELT ORLB32	1							
11	1	1N3520-22070	GUIDE A4,BELT	2							
12	1	1N1240-21040	WASHER	1							
13	1	26016-060164	BOLT 6X16 W/L.W.	1							
14	1	22550-050301	KEY, 5X 30	1							
15	1	22137-160000	WASHER, 16	2							
16	1	26817-160002	NUT, CASTLE M16	2							
17	1	22417-400400	PIN, COTTER 4.0X40	2							

Fig.3. BODY FRAME

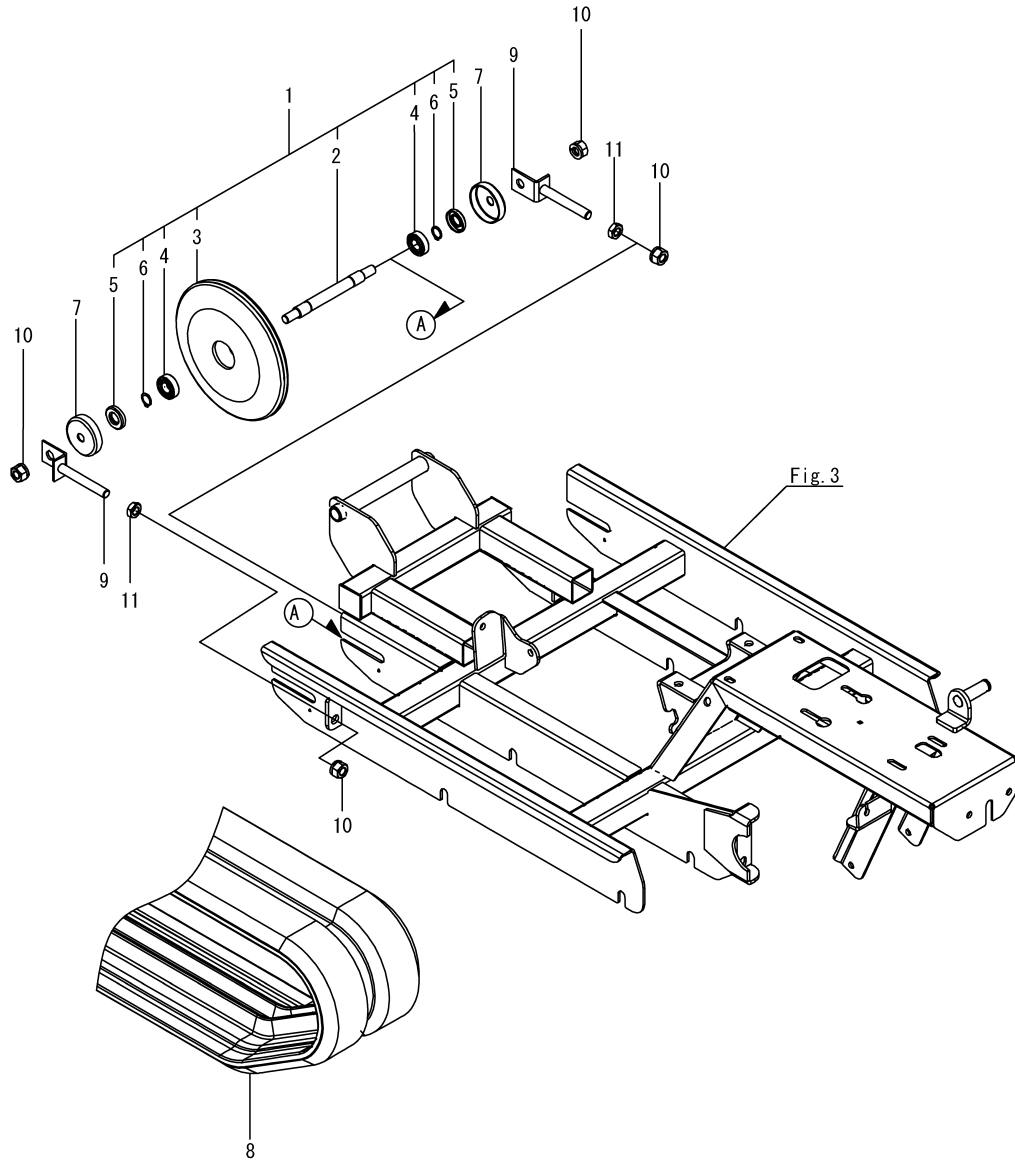


(A)=MC910,PQ
(B)=
(C)=

(D)=
(E)=
(F)=

No.	Lev.	Parts No.	Description	Q'ty						I	R
				(A)	(B)	(C)	(D)	(E)	(F)		
1	1	1N3501-31320	FRAMED,BODY	1							
2	1	1N3501-54120	STEP	1							
3	1	1N3501-58390	COVER A,UNDER	1							
4	1	1N3501-58400	COVER B, UNDER	1							
5	1	1N3501-58410	COVER A, PULLEY	1							
6	1	1N3501-58420	COVER B, PULLEY	1							
7	1	1N3501-54160	STEP L	1							
8	1	1N3501-54170	STEP R	1							
9	1	1N1101-44040	RUBBER,STOPPER	2							
10	1	1N3503-58120	RIVET	13							
11	1	1N1291-58080	BOLT 6X16 W/P&SW.	9							
12	1	26367-060002	NUT, M6	8							
13	1	26018-080204	BOLT M 8X 20	8							
14	1	26367-080002	NUT, M8	8							

Fig.4. IDLER

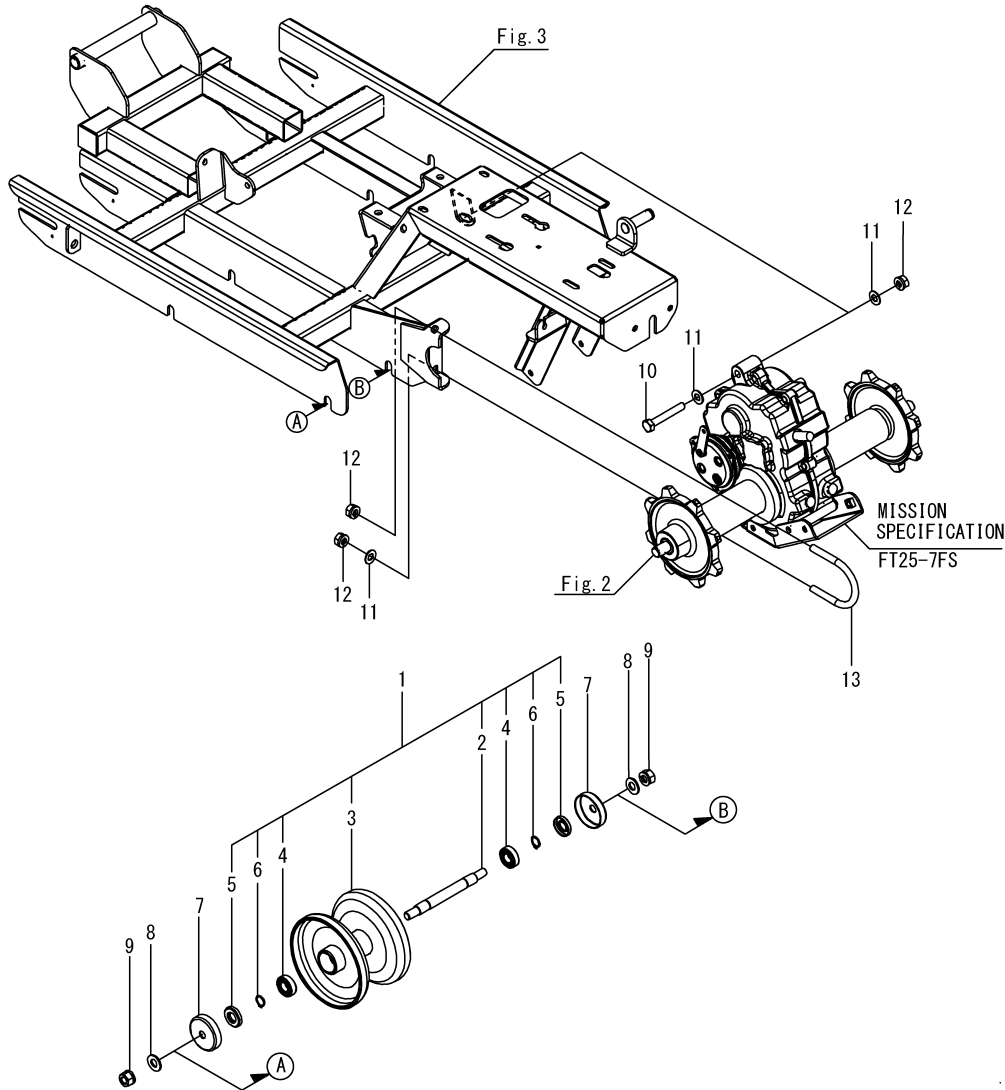


(A)=MC910,PQ
(B)=
(C)=

(D)=
(E)=
(F)=

No.	Lev.	Parts No.	Description	Q'ty						I	R
				(A)	(B)	(C)	(D)	(E)	(F)		
1	1	7N3501-35000	FLOAT RING ASSY.	2							
2	2	1N3501-35020	SHAFT	2							
3	2	1N3501-35040	RING,FLOAT	2							
4	2	24101-060024	BEARING, BALL 6002	4							
5	2	1N3501-36020	SEAL TC153206,OIL	4							
6	2	22242-000150	RING, 15	4							
7	1	1N1091-36000	COVER,OIL SEAL	4							
8	1	1N3501-37010	CRAWLER 180X60X34,RB	2							
9	1	1N1291-37000	SCREW,ADJUST	4							
10	1	26051-120002	NUT, M12	8							
11	1	26757-120002	NUT, LOCK M12	4							

Fig.5. TRACK ROLLER

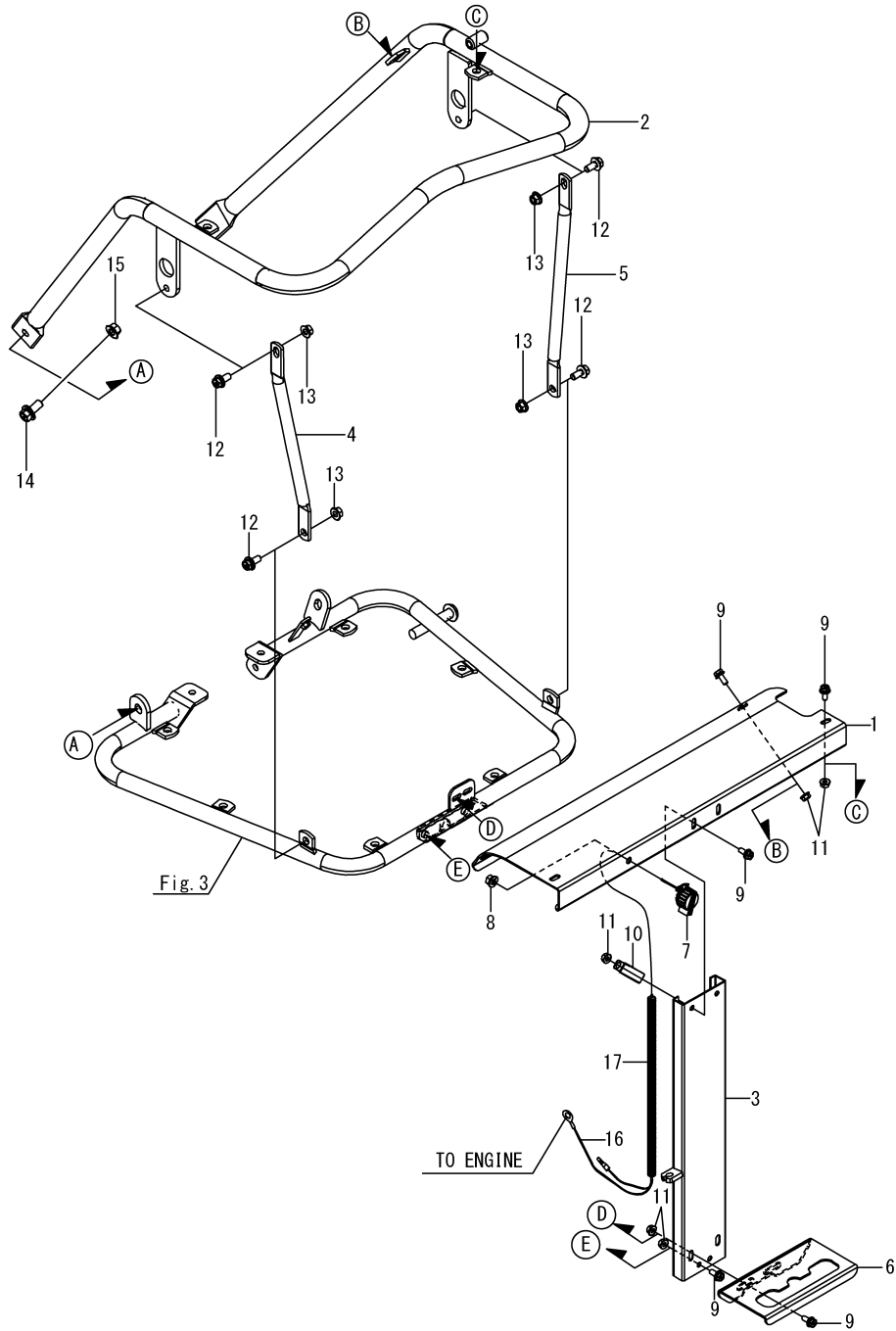


(A)=MC910,PQ
(B)=
(C)=

(D)=
(E)=
(F)=

No.	Lev.	Parts No.	Description	Q'ty						I	R
				(A)	(B)	(C)	(D)	(E)	(F)		
1	1	7N3501-36000	LWR.TRANK ROLLER ASY	4							
2	2	1N3501-35020	SHAFT	4							
3	2	1N3501-36010	ROLLER,LOWER TRACK	4							
4	2	24101-060024	BEARING, BALL 6002	8							
5	2	1N3501-36020	SEAL TC153206,OIL	8							
6	2	22242-000150	RING, 15	8							
7	1	1N1091-36000	COVER,OIL SEAL	8							
8	1	22137-120000	WASHER, 12	8							
9	1	26051-120002	NUT, M12	8							
10	1	26117-100702	BOLT M10X 70 PLATED	1							
11	1	22137-100000	WASHER, 10	4							
12	1	26051-100002	NUT, M10	5							
13	1	1N3501-35030	U-BOLT	2							

Fig.6. HANDLE

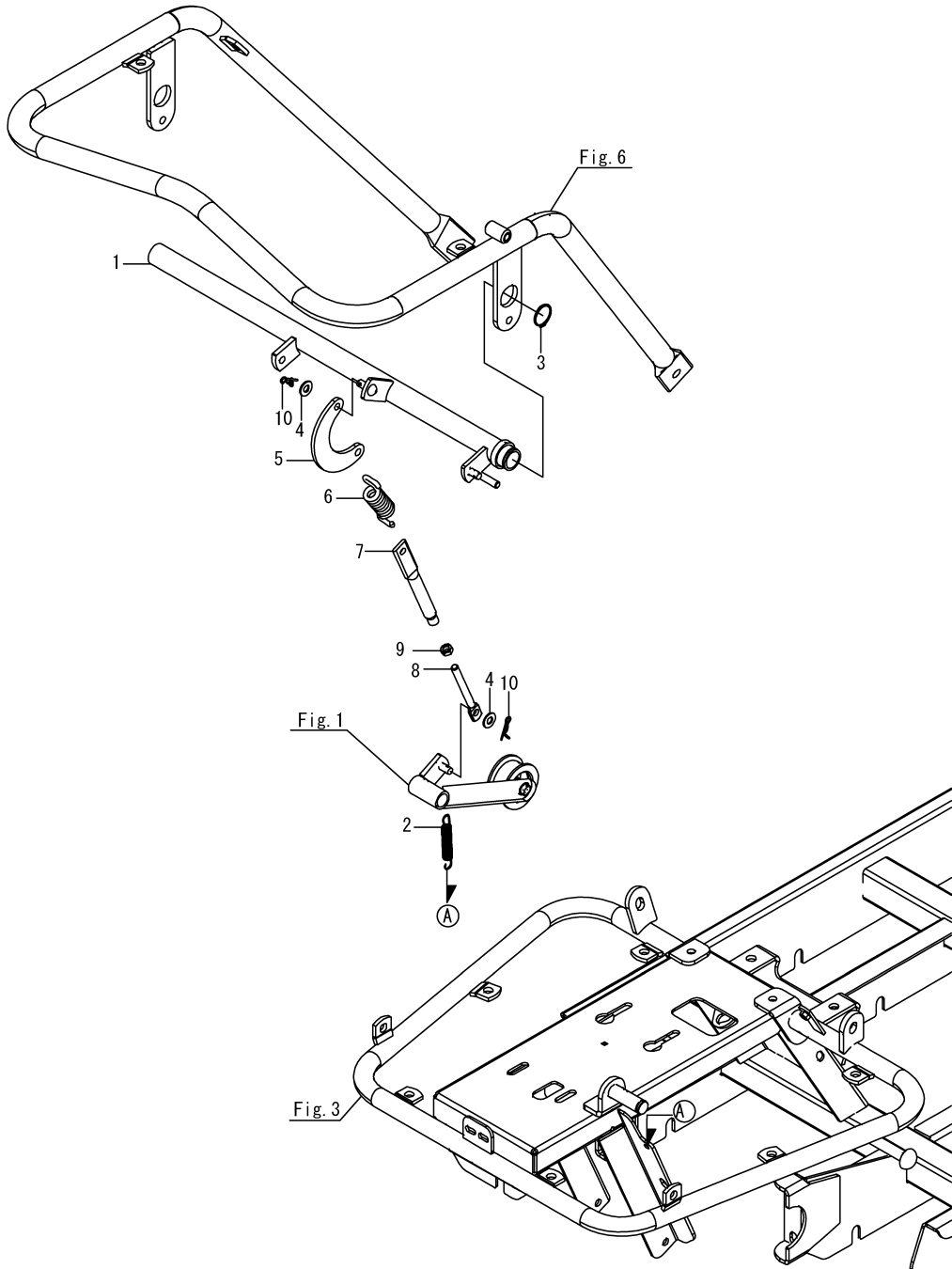


(A)=MC910,PQ
(B)=
(C)=

(D)=
(E)=
(F)=

No.	Lev.	Parts No.	Description	Q'ty						I	R
				(A)	(B)	(C)	(D)	(E)	(F)		
1	1	1N3501-58430	PANEL, OPERATING	1							
2	1	1N3501-47110	HANDLE	1							
3	1	1N3501-58440	STAY, HANDLE	1							
4	1	1N3501-47120	STAY L	1							
5	1	1N3501-47130	STAY R	1							
6	1	1N3501-41000	GUIDE A,CHANGE	1							
7	1	1A1470-40900	SWITCH,STOP	1							
8	1	26051-080002	NUT, M8	1							
9	1	1N1291-58080	BOLT 6X16 W/P&SW.	10							
10	1	1E6020-83890	CLIP	1							
11	1	26367-060002	NUT, M6	10							
12	1	26018-080204	BOLT M 8X 20	4							
13	1	26367-080002	NUT, M8	4							
14	1	26018-100254	BOLT M10X 25	2							
15	1	26367-100002	NUT, M10	2							
16	1	1N3501-52001	WIRE A,LEAD	1							
17	1	1E1185-51220	GATE TUBE (280)	3							

Fig.7. TRAVEL CLUTCH LEVER



(A)=MC910,PQ
(B)=
(C)=

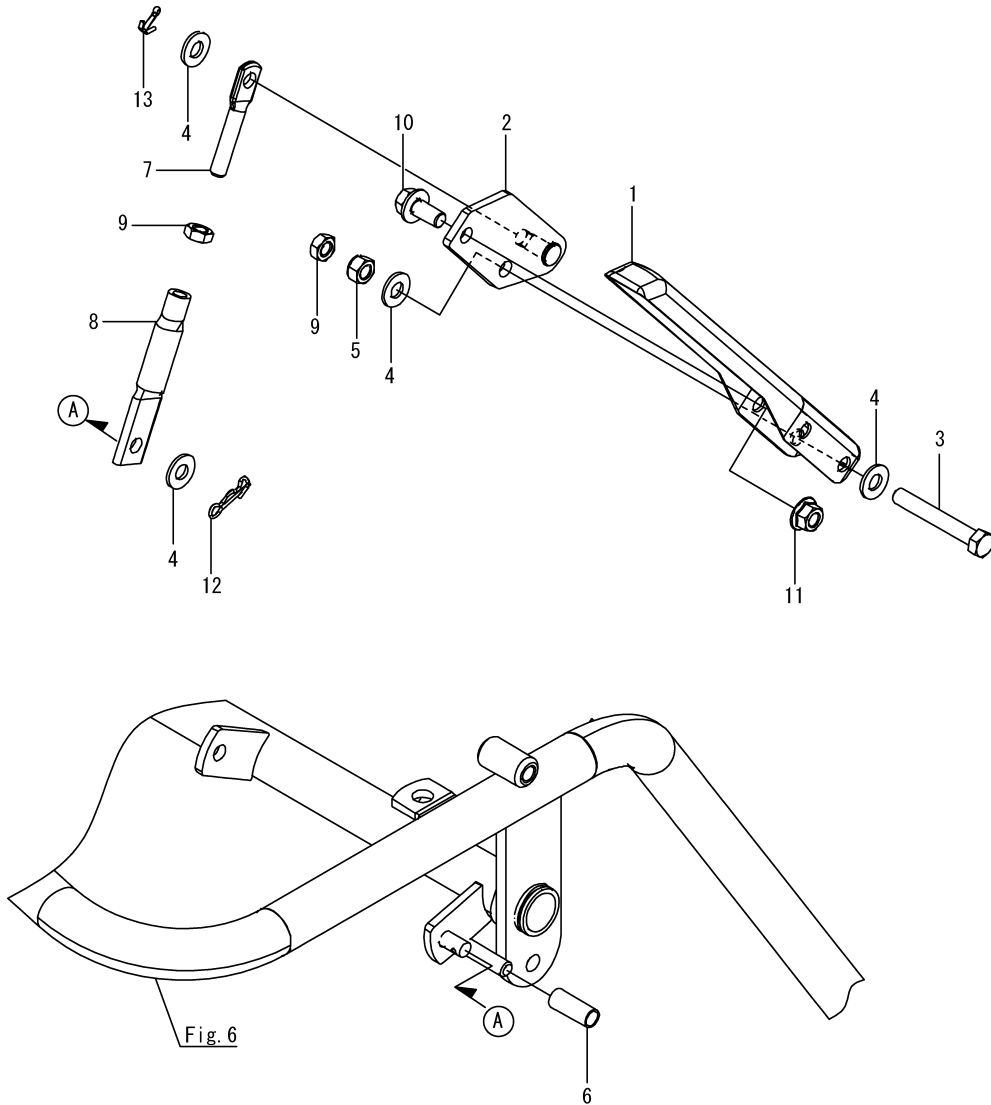
(D)=
(E)=
(F)=

No.	Lev.	Parts No.	Description	Q'ty						I	R
				(A)	(B)	(C)	(D)	(E)	(F)		
1	1	1N3501-42270	BRAKE LINK, CLUTCH	1							
2	1	1N1190-45000	SPRING 11X72.5,TENS.	1							
3	1	22242-000250	RING, 25	1							
4	1	22137-080000	WASHER, 8	2							
5	1	1N1240-42050	LINK,CRESCENT	1							
6	1	1N1210-53030	SPRING 21.5X78,TENS.	1							
7	1	1N1480-42170	ROD	1							
8	1	1N1360-22090	SCREW 8X94,ADJUST	1							
9	1	26757-080002	NUT, LOCK M8	1							
10	1	1N3513-42160	PIN	2							

Fig.8. DEADMAN LEVER

(A)=MC910,PQ
(B)=
(C)=

(D)=
(E)=
(F)=

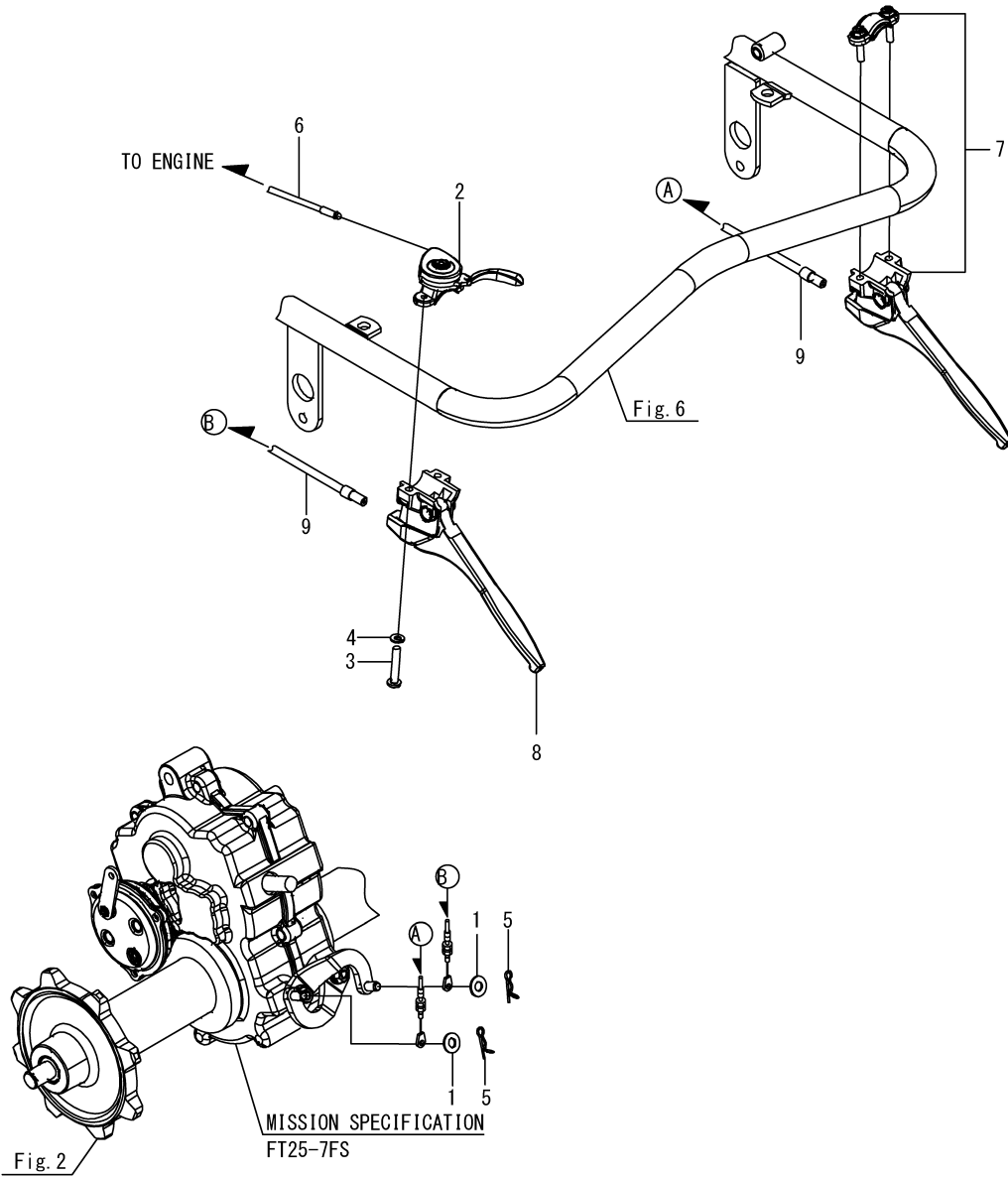


No.	Lev.	Parts No.	Description	Q'ty						I	R
				(A)	(B)	(C)	(D)	(E)	(F)		
1	1	1N1723-31360	LEVER,DEADMAN	1							
2	1	1N3501-42100	BRACKET A ,LEVER	1							
3	1	26116-080552	BOLT, M8X 55 PLATED	1							
4	1	22137-080000	WASHER, 8	4							
5	1	26347-080002	NUT, M8	1							
6	1	1N1240-47130	HOSE,VINYL	1							
7	1	1N3506-42160	SCREW M8X60,ADJUST	1							
8	1	1N1270-22132	ROD B,CLUTCH CONNECT	1							
9	1	26757-080002	NUT, LOCK M8	2							
10	1	26018-080204	BOLT M 8X 20	1							
11	1	26367-080002	NUT, M8	1							
12	1	1N3513-42160	PIN	1							
13	1	22417-250150	COTTER PIN 2.5X15	1							

Fig.11. SIDE CLUTCH LEVER

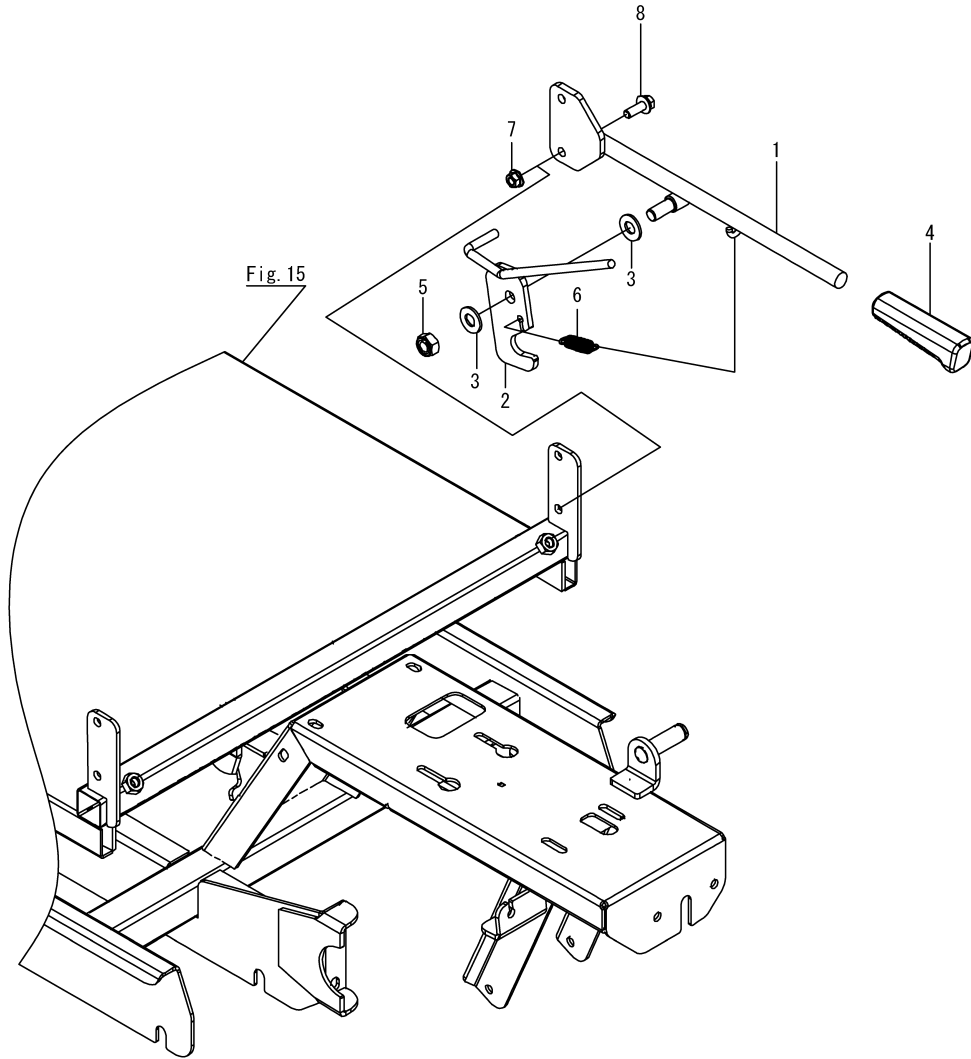
(A)=MC910,PQ
(B)=
(C)=

(D)=
(E)=
(F)=



No.	Lev.	Parts No.	Description	Q'ty						I	R
				(A)	(B)	(C)	(D)	(E)	(F)		
1	1	22137-080000	WASHER, 8	2							
2	1	1E4490-51760	LEVER, ACCELERATOR	1							
3	1	1N3500-51070	SCREW, M6X35	2							
4	1	1N3500-51080	WASHER, SPRING 6	2							
5	1	1N3513-42160	PIN	2							
6	1	1N1360-51000	WIRE, THROTTLE	1							
7	1	1E1140-51040	LEVER, SIDE CLUTCH	1							
8	1	1N3500-51060	LEVER, SIDE CLUTCH	1							
9	1	1N3500-51003	WIRE, SIDE CLUTCH	2							

Fig.12. DUMP CHANGE LEVER

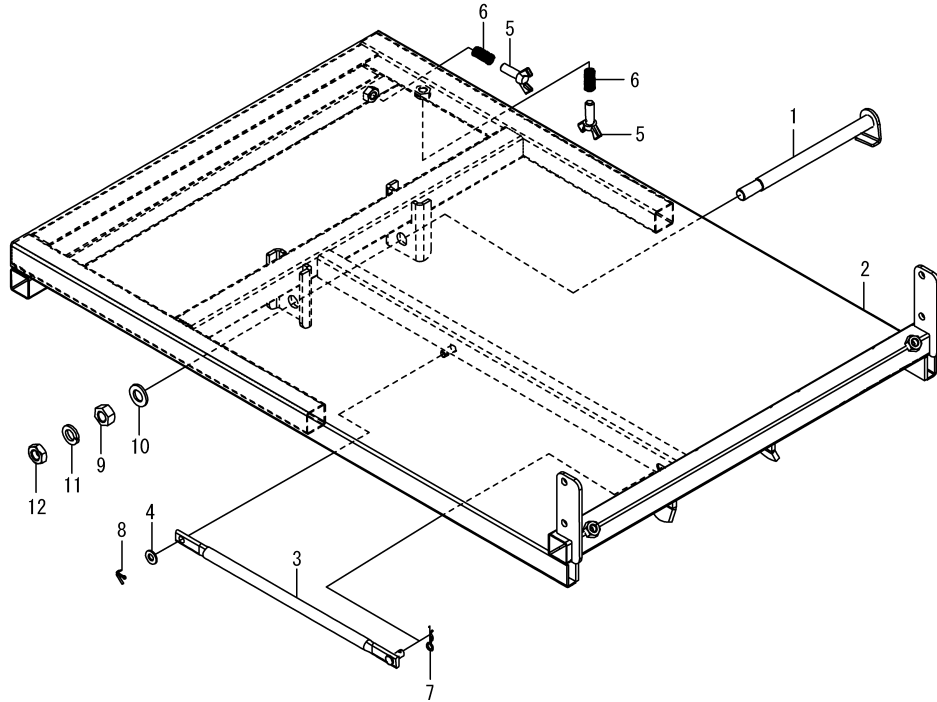


(A)=MC910,PQ
(B)=
(C)=

(D)=
(E)=
(F)=

No.	Lev.	Parts No.	Description	Q'ty						I	R
				(A)	(B)	(C)	(D)	(E)	(F)		
1	1	1N3501-64490	LEVER,DUMP	1							
2	1	1N3500-64110	LEVER, LOCK	1							
3	1	22137-120000	WASHER, 12	2							
4	1	1N1101-44000	GRIP,SIDE CLUTCH	1							
5	1	26347-120002	NUT, M12	1							
6	1	1N1151-53000	SPRING 12.5X54,TENS.	1							
7	1	26367-080002	NUT, M8	2							
8	1	26018-080254	BOLT M 8X 25	2							

Fig.15. PLATFORM CARRIER 2



(A)=MC910,PQ
(B)=
(C)=

(D)=
(E)=
(F)=

No.	Lev.	Parts No.	Description	Q'ty						I	R
				(A)	(B)	(C)	(D)	(E)	(F)		
1	1	1N3501-64510	SHAFT, FULCRUM	1							
2	1	1N3501-64430	CARRIER	1							
3	1	1N3504-64000	BAR, BODY SUPPORT	1							
4	1	22137-080000	WASHER, 8	1							
5	1	26647-100302	BOLT 10X30,WING	4							
6	1	1N1151-53020	SPRING 10.5X25,COMPR	4							
7	1	22360-080000	SNAP PIN 8	1							
8	1	22417-250200	PIN, COTTER 2.5X20	1							
9	1	26717-140002	NUT, M14	1							
10	1	22137-140000	WASHER, 14	1							
11	1	22217-140000	WASHER, SPRING 14	1							
12	1	26757-140002	NUT, LOCK M14	1							

Fig.16. ACCESSORIES & LABELS

(A)=MC910,PQ

(B)=

(C)=

(D)=

(E)=

(F)=



No.	Lev.	Parts No.	Description	Q'ty						I	R
				(A)	(B)	(C)	(D)	(E)	(F)		
1	1	1N3500-93040	LABEL,CHANGE	1							
2	1	1N1313-93030	NAMER,SIDE	2							
3	1	1N3501-93170	MARK	1							
3-1	1	1N3680-93160 (A=F010025)	LABEL, YANMAR	1							
4	1	1N3501-93200	NAMER MC910, MODEL	1							
5	1	1N3506-93260	LABEL,CLUTCH	1							
6	1	1N3504-93180	LABEL 98DB,NOISE	1							
7	1	1N3563-93020	LABEL,SAFETY	1							
8	1	1N3563-93050	LABEL,SAFETY	1							
9	1	1N1340-93280	PLATE 300K, LOADAGE	1							
10	1	1N3507-93160	LEVEL,OIL	1							
11	1	1N3503-93190	LABEL, ACCEL	1							
12	1	1A2720-86230	LABEL,RECOIL	1							
13	1	OATP1-G00600	INSTRUCTION BOOK	1							

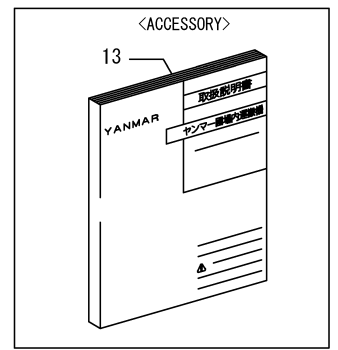
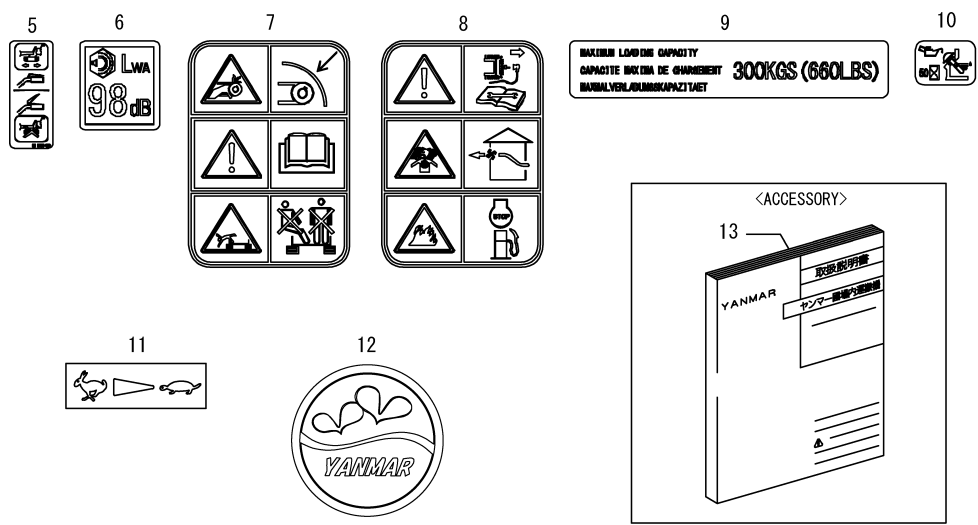
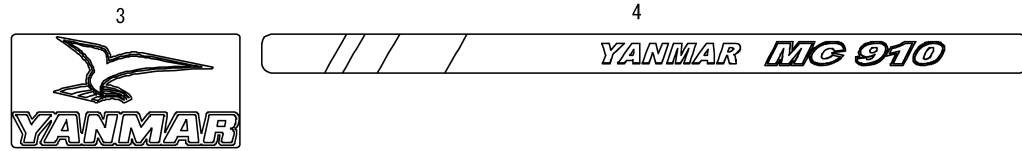
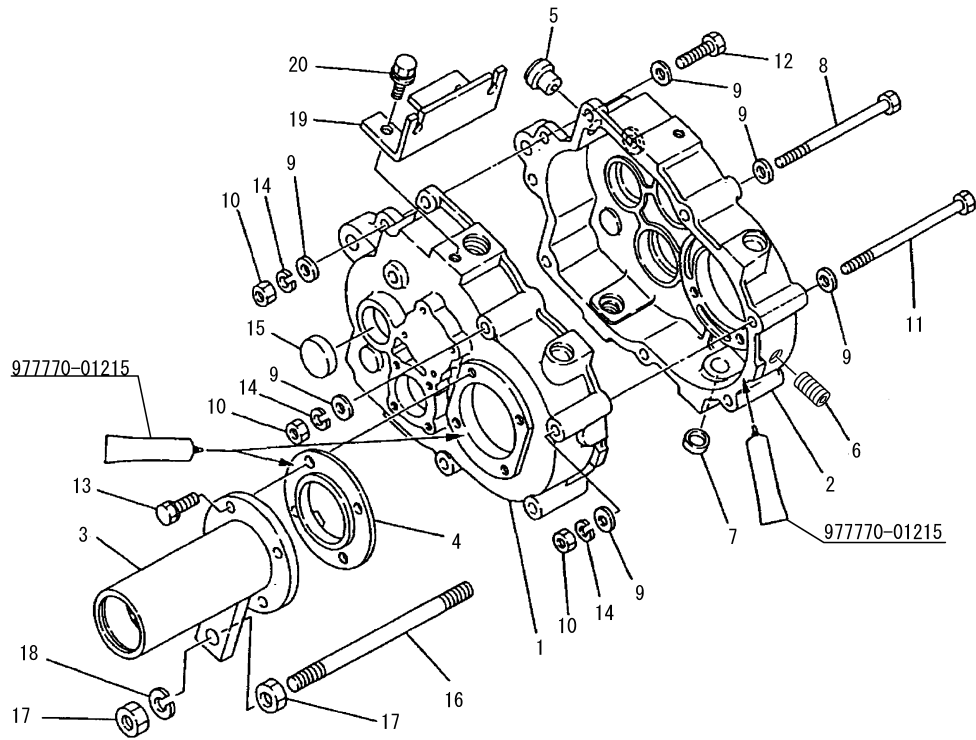


Fig.17. TRANSMISSION CASE

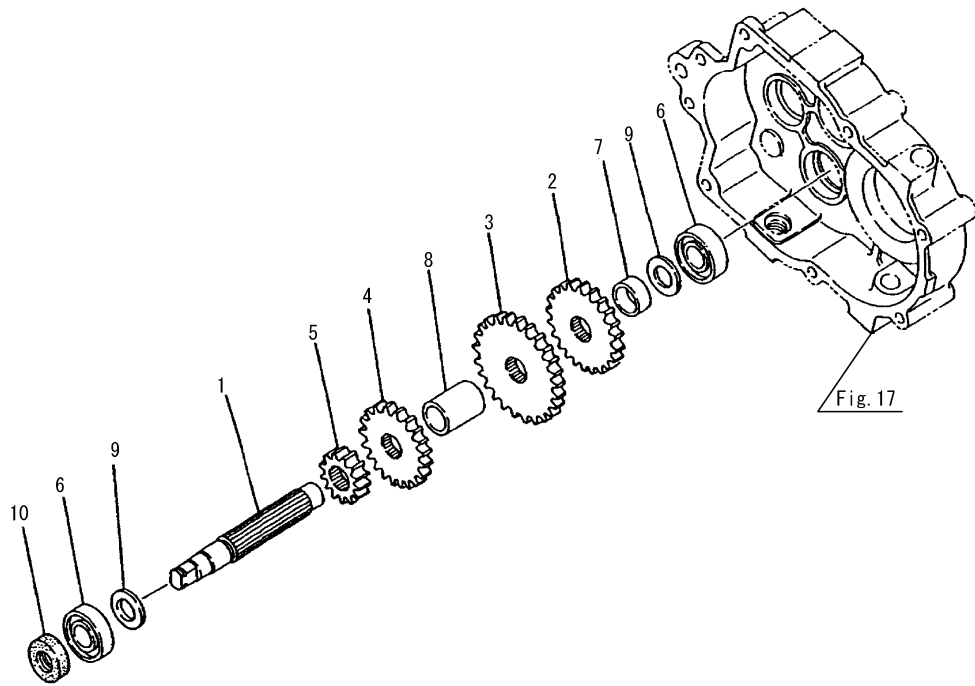


(A)=FT25-7FS
(B)=
(C)=

(D)=
(E)=
(F)=

No.	Lev.	Parts No.	Description	Q'ty						I	R
				(A)	(B)	(C)	(D)	(E)	(F)		
1	1	1N3500-24000	CASE L, TRANSMISSION	1							
2	1	1N3500-24011	CASE R, TRANSMISSION	1							
3	1	1N1296-24001	HOLDER.AXLE	2							
4	1	1N1296-24014	CLUTCH NAIL	2							
5	1	1N3503-24040	PLUG, HOLED OIL	1							
6	1	1N3530-24060	PLUG PT1/4,DRAIN	1							
7	1	1N1430-24080	CAP,SEAL	2							
8	1	26117-081102	BOLT M 8X110 PLATED	2							
9	1	22137-080000	WASHER, 8	16							
10	1	26717-080002	NUT, M8	8							
11	1	26117-081202	BOLT M 8X120 PLATED	2							
12	1	26117-080302	BOLT M 8X 30	4							
13	1	26016-080254	BOLT M 8X 25	8							
14	1	22217-080000	WASHER, SPRING 8	8							
15	1	1N1430-24000	PLUG, BLIND	1							
16	1	1N1296-24020	SCREW M12X180	1							
17	1	26717-120002	NUT, M12	4							
18	1	22217-120000	WASHER, SPRING 12	2							
19	1	1N3500-24030	BRACKET, OUTER	1							
20	1	26016-080164	BOLT M 8X 16	2							

Fig.19. TRANSMISSION SHAFT B

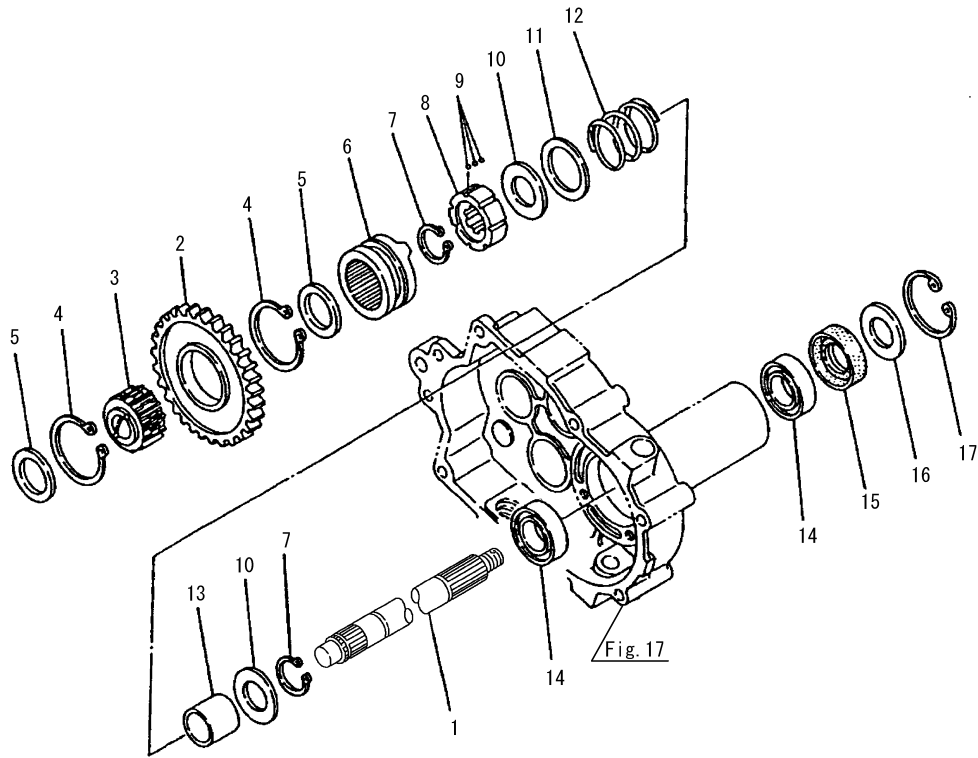


(A)=FT25-7FS
(B)=
(C)=

(D)=
(E)=
(F)=

No.	Lev.	Parts No.	Description	Q'ty						I	R
				(A)	(B)	(C)	(D)	(E)	(F)		
1	1	1N1296-25000	SHAFT,2ND	1							
2	1	1N1291-25340	GEAR 28	1							
3	1	1N1296-25020	GEAR 41	1							
4	1	1N1296-25030	GEAR 30	1							
5	1	1N1291-25040	GEAR 16	1							
6	1	24101-062034	BEARING, BALL 6203	2							
7	1	1N1291-25050	COLLAR 20.5X26X11	1							
8	1	1N1291-25060	COLLAR 20.2X27.2X33	1							
9	1	1N1430-25090	COLLAR	2							
10	1	24421-173507	SEAL, OIL TC173507	1							

Fig.21. MAIN SHAFT

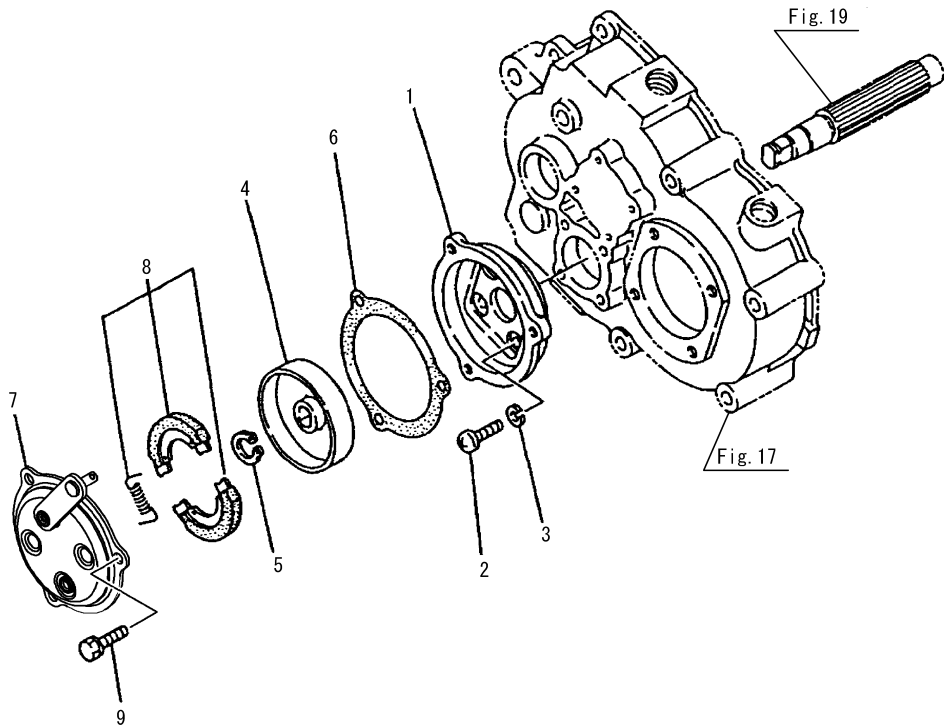


(A)=FT25-7FS
(B)=
(C)=

(D)=
(E)=
(F)=

No.	Lev.	Parts No.	Description	Q'ty						I	R
				(A)	(B)	(C)	(D)	(E)	(F)		
1	1	1N1994-25000	AXLE R	2							
2	1	1N1291-25100	GEAR 44	1							
3	1	1N1291-25110	GEAR 28,CLUTCH	1							
4	1	22242-000500	RING, 50	2							
5	1	1N1291-25120	PLATE,BALL SUPPORTG	2							
6	1	1N1291-25135	GEAR 28,SIDE CLUTCH	2							
7	1	22242-000250	RING, 25	4							
8	1	1N1291-25140	BOSS,DRIVE	2							
9	1	1N1291-25150	BALL 4,STEEL	42							
10	1	1N1291-25160	LINER 2.0X25.5X46	4							
11	1	1N1291-25170	LINER 2.0X35.5X50	2							
12	1	1N1291-25180	SPRING,CLUTCH	2							
13	1	1N1291-25190	COLLAR 25.2X31.8X27.	2							
14	1	24101-060054	BEARING, BALL 6005	4							
15	1	24421-254708	SEAL, OIL TC254708	2							
16	1	1N1291-25200	COVER,OIL SEAL	2							
17	1	22252-000470	RING, 47	2							

Fig.22. BRAKE

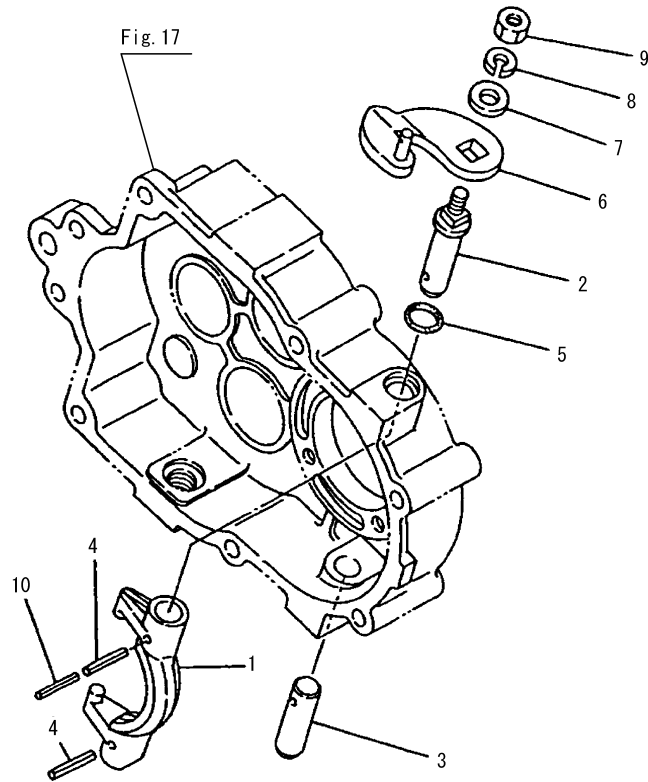


(A)=FT25-7FS
(B)=
(C)=

(D)=
(E)=
(F)=

No.	Lev.	Parts No.	Description	Q'ty						I	R
				(A)	(B)	(C)	(D)	(E)	(F)		
1	1	1N1296-25040	MOUNT,BRAKE	1							
2	1	26557-060162	SCREW M 6X 16	4							
3	1	22217-060000	WASHER, SPRING 6	4							
4	1	1N1291-25220	DRUM,BRAKE	1							
5	1	22242-000140	RING, 14	1							
6	1	1N1291-25230	PACKING,BRAKE PLATE	1							
7	1	1N3501-25000	RING	1							
8	1	7N1291-25010	BRAKE SHOE ASSY.	1							
9	1	26016-060124	BOLT, 6 X 12	3							

Fig.23. SIDE CLUTCH

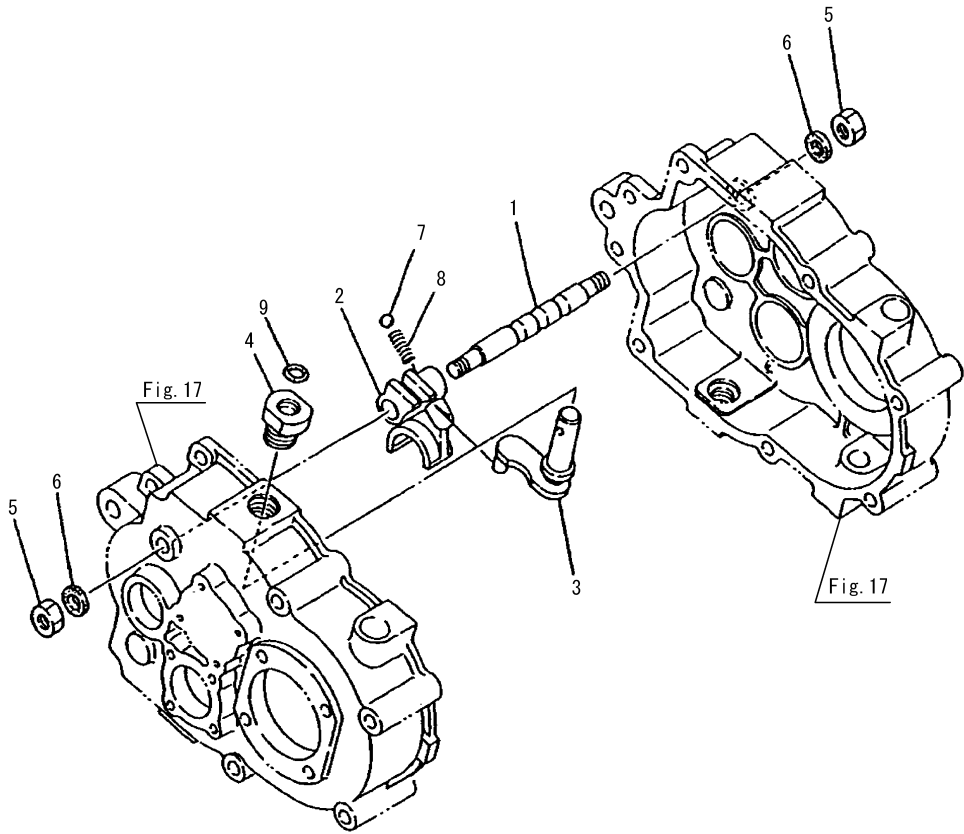


(A)=FT25-7FS
(B)=
(C)=

(D)=
(E)=
(F)=

No.	Lev.	Parts No.	Description	Q'ty						I	R
				(A)	(B)	(C)	(D)	(E)	(F)		
1	1	1N1296-25050	SHIFTER,SIDE CLUTCH	2							
2	1	1N1296-25060	PIN,SHIFT LEVER UPPR	2							
3	1	1N1296-25070	PIN,SHIFT LEVER LOWR	2							
4	1	22351-050025	PIN, SPRING 5.0X25	4							
5	1	24311-000140	O-RING, 1AP14.0	2							
6	1	1N1291-25301	SIDE CLUTCH LEVER	2							
7	1	22137-080000	WASHER, 8	2							
8	1	22217-080000	WASHER, SPRING 8	2							
9	1	26717-080002	NUT, M8	2							
10	1	22351-030025	PIN, SPRING 3.0X25	2							

Fig.24. MAIN CHANGE



(A)=FT25-7FS
(B)=
(C)=

(D)=
(E)=
(F)=

No.	Lev.	Parts No.	Description	Q'ty						I	R
				(A)	(B)	(C)	(D)	(E)	(F)		
1	1	1N1291-26000	ROD,SHIFTER	1							
2	1	1N1291-26010	SHIFTER,GEAR	1							
3	1	1N1291-26020	LEVER,SHIFT	1							
4	1	1N1291-26030	GUIDE,SHIFT LEVER	1							
5	1	26717-100002	NUT, M10	2							
6	1	1N1430-26030	WASHER,SEAL	2							
7	1	1N1150-25010	BALL 8,STEEL	1							
8	1	1N1291-26040	SPRING,FORK	1							
9	1	24311-000140	O-RING, 1AP14.0	1							

Parts No. Index

Parts No.	Fig. No.	Ref. No.
1A1470-40900	6	7
1A2720-86230	16	12
1E1140-51040	11	7
1E1185-51220	6	17
1E4490-51760	11	2
1E6020-83890	6	10
1N1091-36000	4	7
	5	7
1N1101-44000	12	4
1N1101-44040	3	9
1N1150-25010	24	7
1N1151-53000	12	6
1N1151-53020	15	6
1N1190-45000	7	2
1N1210-53030	7	6
1N1215-51000	9	6
1N1240-21040	2	12
1N1240-42050	7	5
1N1240-47130	8	6
1N1270-22132	8	8
1N1291-25010	18	2
1N1291-25040	19	5
1N1291-25050	19	7
1N1291-25060	19	8
1N1291-25070	20	1
1N1291-25080	20	6
1N1291-25100	21	2
1N1291-25110	21	3
1N1291-25120	21	5
1N1291-25135	21	6
1N1291-25140	21	8
1N1291-25150	21	9
1N1291-25160	21	10
1N1291-25170	21	11
1N1291-25180	21	12
1N1291-25190	21	13
1N1291-25200	21	16
1N1291-25220	22	4
1N1291-25230	22	6
1N1291-25301	23	6
1N1291-25310	18	1
1N1291-25340	19	2
1N1291-25350	20	2
1N1291-26000	24	1
1N1291-26010	24	2
1N1291-26020	24	3
1N1291-26030	24	4
1N1291-26040	24	8
1N1291-37000	4	9
1N1291-58080	3	11

Parts No.	Fig. No.	Ref. No.
1N1291-58080	6	9
1N1293-53010	9	2
1N1296-24001	17	3
1N1296-24014	17	4
1N1296-24020	17	16
1N1296-25000	19	1
1N1296-25020	19	3
1N1296-25030	19	4
1N1296-25040	22	1
1N1296-25050	23	1
1N1296-25060	23	2
1N1296-25070	23	3
1N1313-93030	16	2
1N1340-93280	16	9
1N1360-22090	7	8
	9	3
	11	6
1N1360-51000	11	6
1N1366-53000	10	3
1N1430-22070	1	5
1N1430-24000	17	15
1N1430-24080	17	7
1N1430-25090	18	5
	19	9
	20	5
1N1430-26030	24	6
1N1432-44000	10	2
1N1480-42170	7	7
1N1520-53020	14	4
1N1723-31360	8	1
1N1994-25000	21	1
1N3500-24000	17	1
1N3500-24011	17	2
1N3500-24030	17	19
1N3500-41000	10	4
1N3500-41010	10	1
1N3500-51003	11	9
1N3500-51060	11	8
1N3500-51070	11	3
1N3500-51080	11	4
1N3500-64110	12	2
1N3500-93040	16	1
1N3501-21010	2	6
1N3501-21070	2	5
1N3501-22000	1	1
1N3501-25000	22	7
1N3501-31320	3	1
1N3501-35020	4	2
	5	2
1N3501-35030	5	13
1N3501-35040	4	3

Parts No.	Fig. No.	Ref. No.
1N3501-36010	5	3
1N3501-36020	4	5
	5	5
1N3501-37010	4	8
1N3501-41000	6	6
1N3501-42100	8	2
1N3501-42260	9	1
1N3501-42270	7	1
1N3501-47110	6	2
1N3501-47120	6	4
1N3501-47130	6	5
1N3501-51000	9	9
1N3501-52001	6	16
1N3501-54120	3	2
1N3501-54160	3	7
1N3501-54170	3	8
1N3501-58370	2	1
1N3501-58390	3	3
1N3501-58400	3	4
1N3501-58410	3	5
1N3501-58420	3	6
1N3501-58430	6	1
1N3501-58440	6	3
1N3501-64430	15	2
1N3501-64490	12	1
1N3501-64510	15	1
1N3501-65130	14	1
1N3501-65150	14	2
1N3501-65160	14	3
1N3501-66170	13	1
1N3501-66180	13	2
1N3501-93170	16	3
1N3501-93200	16	4
1N3503-24040	17	5
1N3503-35060	2	2
1N3503-58120	3	10
1N3503-93190	16	11
1N3504-64000	15	3
1N3504-93180	16	6
1N3506-42160	8	7
1N3506-93260	16	5
1N3507-93160	16	10
1N3513-42160	7	10
	8	12
	11	5
1N3520-22070	2	11
1N3530-24060	17	6
1N3563-93020	16	7
1N3563-93050	16	8
1N3569-42000	9	8

Parts No.	Fig. No.	Ref. No.
1N3680-93160	16	3 -1
22137-060000	9	7
	13	4
22137-080000	2	3
	7	4
	8	4
	11	1
	15	4
	17	9
	23	7
22137-100000	5	11
22137-120000	5	8
	12	3
22137-140000	15	10
22137-160000	2	15
22217-060000	22	3
22217-080000	17	14
	23	8
22217-120000	17	18
22217-140000	15	11
22242-000140	22	5
22242-000150	1	3
	4	6
	5	6
22242-000160	1	4
22242-000170	20	4
22242-000250	7	3
	21	7
22242-000500	21	4
22252-000350	1	6
22252-000470	21	17
22351-030025	23	10
22351-030030	10	6
22351-050025	23	4
22351-050030	10	5
22360-080000	15	7
22417-250150	8	13
22417-250200	15	8
22417-400400	2	17
22550-050301	2	14
24101-060024	4	4
	5	4
24101-060034	18	4
24101-060054	21	14
24101-062024	18	6
24101-062034	19	6
	20	3
24104-062024	1	2
24311-000140	23	5
	24	9

Parts No. Index

Parts No.	Fig. No.	Ref. No.
24421-173007	18	3
24421-173507	19	10
24421-254708	21	15
25123-003201M	2	10
26016-060124	22	9
26016-060164	2	13
26016-080164	17	20
26016-080254	17	13
26018-080164	2	9
26018-080202	2	7
26018-080204	3	13
	6	12
	8	10
	13	7
26018-080254	12	8
26018-100254	6	14
26051-060002	13	6
26051-080002	2	4
	6	8
	9	5
26051-100002	5	12
26051-120002	4	10
	5	9
26116-080552	8	3
26117-080302	17	12
26117-081102	17	8
26117-081202	17	11
26117-100702	5	10
26347-080002	8	5
26347-120002	12	5
26367-060002	3	12
	6	11
26367-080002	2	8
	3	14
	6	13
	8	11
	12	7
	13	8
26367-100002	6	15
26557-060162	22	2
26587-060162	13	5
26647-100202	13	3
26647-100302	15	5
26717-080002	17	10
	23	9
26717-100002	24	5
26717-120002	17	17
26717-140002	15	9
26757-080002	7	9
	8	9

Parts No.	Fig. No.	Ref. No.
26757-080002	9	4
26757-120002	4	11
26757-140002	15	12
26817-160002	2	16
7N1291-25010	22	8
7N3501-35000	4	1
7N3501-36000	5	1
OATP1-G00600	16	13

Parts No.	Fig. No.	Ref. No.
-----------	----------	----------

Parts No.	Fig. No.	Ref. No.
-----------	----------	----------